



TECHNICAL DATA SHEET

SK1LP

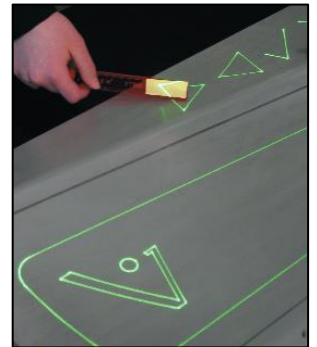
Laser projection system

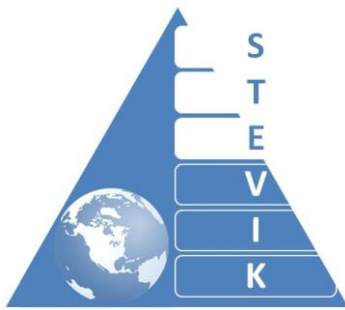
► DESCRIPTION

SK1LP system accurately projects a laser template onto moulds and parts to guide operators through the process of part fabrication whether it is ply layup, paint masking, harness assembly or component location.

VIRTEK
A Gerber Technology Company

- Projected icon menu included letters and icons (forward, back), V (to confirm the action) are projected straight to the mold. Operator is at his post, he doesn't have to move away which reduces the errors possibility. Laser menu and controlling icons are patented by Virtek company.
- Easily move through process steps with iconic menus.
- Eliminate non-value added work such as reconfiguring or re-tooling workcells.
- Display a 3D view of the laser path and target locations.
- Shorten the learning curve to get new operators to a high level of proficiency in just a few hours.
- Include text and/or multimedia instructions to guide operators through each step of the build process.
- Maintain traceability down to a single keystroke.
- Further maximize your production with the addition of Multi-Pack functionality to your LaserEdge 5 workstation.
- Share one workstation for multiple jobs (work packages) running concurrently.
- Assign any projectors to any one or more jobs as required with no reconfiguration.
- Only Virtek's Laser Edge 5 can offer operate with the full independence.





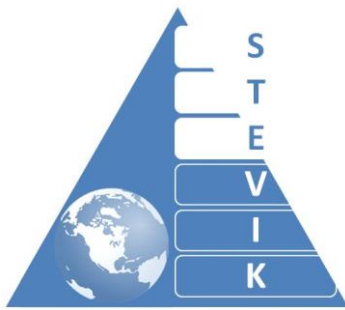
TECHNICAL DATA SHEET

SK1LP

Laser projection system

► TECHNICAL DATA

| Technical characteristics | | Value / Description |
|---------------------------|---|--|
| Position Accuracy | Short range: | ± 0.015" (0.38mm) or better at a distance of 17' over 17' x 17' (5.1m x 5.1m) area |
| | Long range: | ± 0.015" (0.38mm) or better at a distance of 17' over 17' x 17' (5.1m x 5.1m) area |
| | | ± 0.030" (0.76mm) or better at a distance of 30' over 30' x 30' (9.1m x 9.1m) area |
| Field of View (FOV) | 60° or 80°, depending on model | |
| Laser Source | 5mW maximum power 0.9mw "safe mode" | |
| Laser | Laser green (532nm) or red (650nm) | |
| Laser Class | North America | Class 3R per 21CFR 1040 (CDRH) Laser Notice 50 |
| | International | Class 3R meeting the IEC/EN60825-1:2007 standard for CE certification |
| Power Requirements | 115-230VAC or 50/60 Hz | |
| Physical | Length | 21.5" (54.61cm) |
| | Width | 11.5" (29.21cm) |
| | Height | 6.95" (17.65cm) |
| | Weight | 35 lbs (16 kg) |
| Environmental | Operating Temperature 0°C to +45°C | |
| | Non-Operating Temperature -20°C to +65°C | |
| | Humidity 80% non-condensing | |
| Accessories and Options | Hand-held remote controller | |
| | One swivel support bracket per laser head | |
| | Repairable retro-reflective targets | |



TECHNICAL DATA SHEET

SK1LP

Laser projection system

| | |
|--------------------------|-------------------------------------|
| | Projector stands |
| | Barcode reader on request |
| | Certification fixture (recommended) |
| | Extended support contracts |
| Standard warranty period | 12 months |

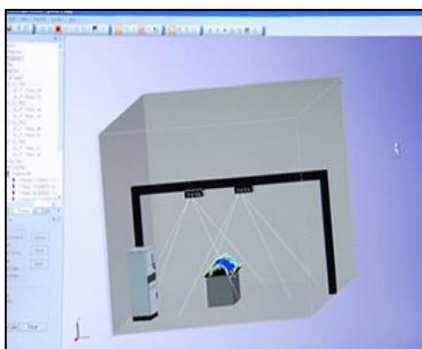
► BENEFITS

By using the SK1LP integrated system, the benefit is immediately visible in area of:

- **Increase of throughput**, by eliminating the use of physical templates, productivity of the layup process improves by as much as 50 per cent.
- **Accuracy of the system**, by elimination of costly human errors that may occur when using physical templates. It also provides critical quality control checks.
- **Control of the process**, by ensuring operators adhere to a specified manufacturing process, following proper steps and fabricating parts in the correct order.



Associated with our planner system, you will be able to:



- **Save time**, by using CAD files from STEP, IGES, CATIA® V4 and V5 formats to quickly generate projection files;
- **Eliminate errors**, by addressing issues prior to production by simulating the process sequence just as the system will interpret the sequence in production;
- **Troubleshoot manufacturing issues**, by loading files into the planner system to determine the root cause of manufacturing projection problems in minutes rather than hours.

► INSTALLATION & TRAINING

Our team of specialist will provide you all necessary assistance for installation of the system. This assistance is adapted depending your needs. Training of operators, manufacturing engineers or other trainings are performed on site upon request.

Please contact us for more detailed information as well as for system development according to your technical specification.